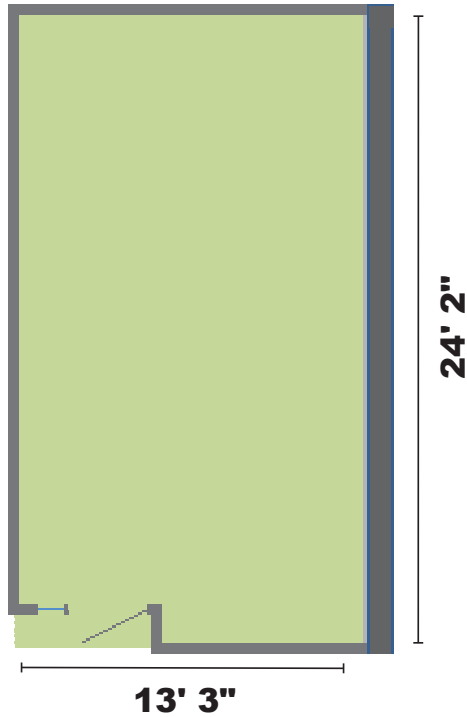


Unit B108

Monroe Professional Center Commercial Condominium
[335 usable square feet]



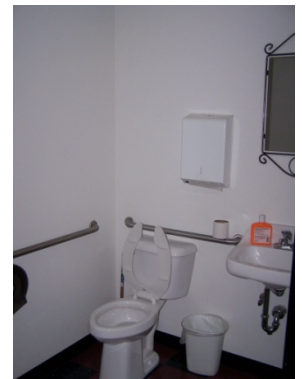
Unit entrance



Parking



Interior



Adjoining ADA Keyed Bathroom

Located in the lowest level of the Monroe Professional Center Condominium, immediately adjacent to an at-grade project entrance, Unit B108 is an efficiency office. The ADA compliant entry door features a sidelight that allows natural light into the space. Heat is provided by an electric furnace. The unit features in wall wiring for telephone and computer.

Unit B108 exits to a common hallway that leads to project entrances from 18th Avenue and one of the two project parking lots. The project's passenger elevator provides handicap access to other levels.

Unit Address: 1009 18th Avenue, Monroe, Wisconsin

Unit B108 is owned Rex A. Ewald and Sharon M. Ewald.

For additional information about this unit check the Monroe Professional Center web site [www.mpccondos.com] or contact:

Rex A. Ewald
1015 18th Avenue
P.O. Box 56
Monroe, Wisconsin 53566
(608) 329-9610
raewald@voegeli-ewald.com

Unit Information

Usable square feet [BOMA measurement]:	335
Rentable square feet [BOMA measurement]:	366
Real Estate Tax Parcel #:	23 251 0090.0800
2017 Real Estate Taxes:	\$431.26
Condominium Association votes [1000 total]:	9
% ownership of common elements:	0.9
Ceiling height:	7'9"

Utilities metered to unit:

Electricity

Included condominium services:

Municipal water
Municipal sewer
Solid waste collection
Recyclables collection
Snow removal
Parking [2 lots – 32 stalls]