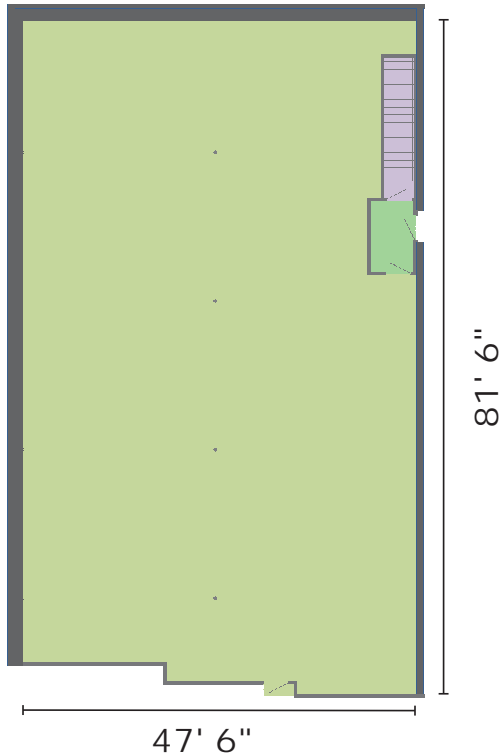
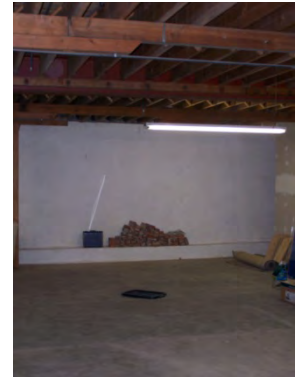


# Unit B101

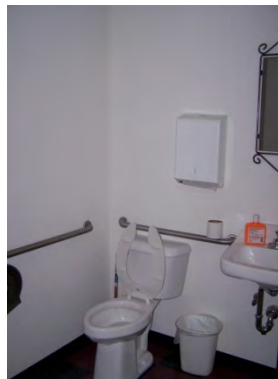
Monroe Professional Center Commercial Condominium  
[3,721 usable square feet]



Common hallway



Floor and ceiling



ADA Bathroom



Parking

Located in the lowest level of the Monroe Professional Center Condominium, Unit B101 is a large space with a concrete floor and no dividing walls. The space is heated by a high efficiency gas furnace. Ceiling height is approximately 9 feet throughout the unit.

The north entrance is from a landing at the base of a staircase that leads directly outside on the north façade of the Monroe Professional Center Building [10th Street]. The south entrance is from a modern hallway and is located a few steps from an at-grade entrance from one of the project's two dedicated parking lots.

Unit B101 is served by a modern ADA compliant restroom located off the hallway close to the south unit entrance.

**Unit Address: 1720 10<sup>th</sup> Street, Monroe, Wisconsin**

**Unit B101 is owned by Rex A. Ewald and Sharon M. Ewald.**

**For additional information about this unit check the Monroe Professional Center web site [[www.mpccondos.com](http://www.mpccondos.com)] or contact:**

Rex A. Ewald  
1015 18th Avenue  
P.O. Box 56  
Monroe, Wisconsin 53566  
(608) 329-9610  
raewald@voegeli-ewald.com

## Unit Information

Usable square feet [BOMA measurement]:	3,721
Rentable square feet [BOMA measurement]:	4,068
Real Estate Tax Parcel #:	23 251 0090.0100
2016 Real Estate Taxes:	\$1,613.37
Condominium Assoc. votes [1000 total]:	80
% ownership of common elements:	8.0
Ceiling height:	8'6"

## Utilities metered to unit:

Natural gas

## Included condominium services:

Municipal water  
Municipal sewer  
Solid waste collection  
Recyclables collection  
Snow removal  
Parking [2 lots – 32 stalls]