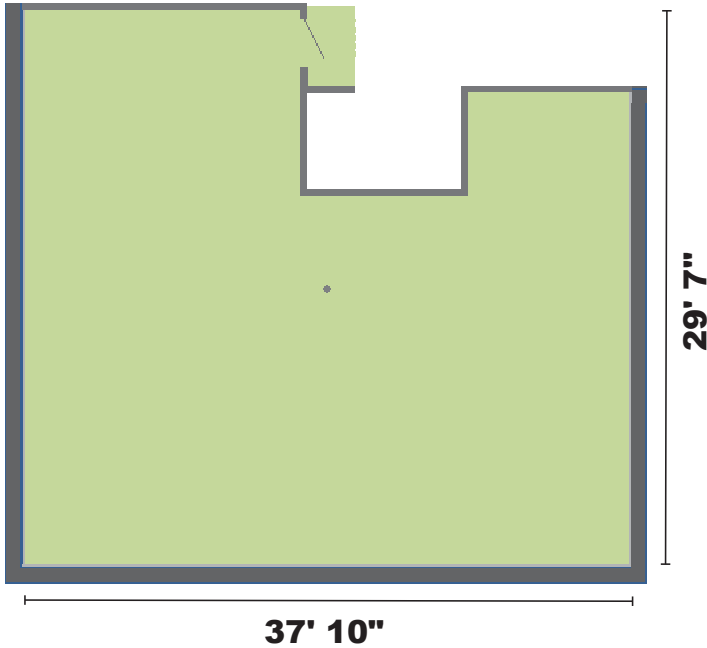
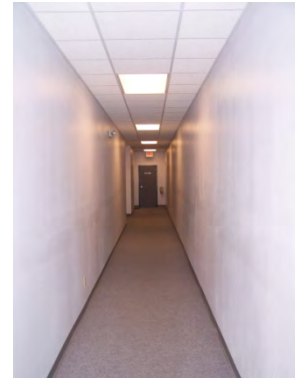


Unit 106

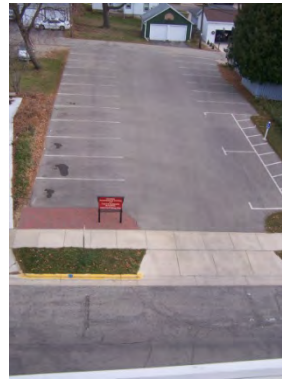
Monroe Professional Center Commercial Condominium
[1,186 usable square feet]



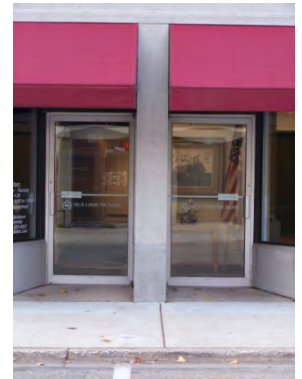
Hallway facing north



Hallway facing east



Parking lots



10th Street building entrance

Located on the first level of the Monroe Professional Center Condominium, Unit 106 is an undeveloped space suitable for development as a professional office.

The entrance to Unit 106 is from the project's first level common hallway that connects with exits on the north [10th Street] and the east [18th Avenue]. Unit 106 is also located only a short walk down the hallway from the project's passenger elevator.

Unit Address: 1720 10th Street, Monroe, Wisconsin

Unit 106 is owned by Rex A. Ewald and Sharon M. Ewald.

For additional information about this unit check the Monroe Professional Center web site www.mpccondos.com or contact:

Rex A. Ewald
1015 18th Avenue
P.O. Box 56
Monroe, Wisconsin 53566
(608) 329-9610
raewald@voegeli-ewald.com

Unit Information

Usable square feet [BOMA measurement]:	1,186
Rentable square feet [BOMA measurement]:	1,325
Real Estate Tax Parcel #:	23 251 0090.1600
2016 Real Estate Taxes:	\$ 821.89
Condominium Association votes [1000 total]:	33
% ownership of common elements:	3.3
Ceiling height [unfinished]:	13'

Utilities metered to units:

N/A [undeveloped]

Included condominium services:

Municipal water
Municipal sewer
Solid waste collection
Recyclables collection
Snow removal
Parking [2 lots – 32 stalls]